

# Wiley Park Station

## Your transport options

Plan your trip at [transportnsw.info](https://transportnsw.info)  
Allow extra travel time

### Southwest transport changes

**M1**

**19 August 2024**

M1 Metro opened between Chatswood and Sydenham

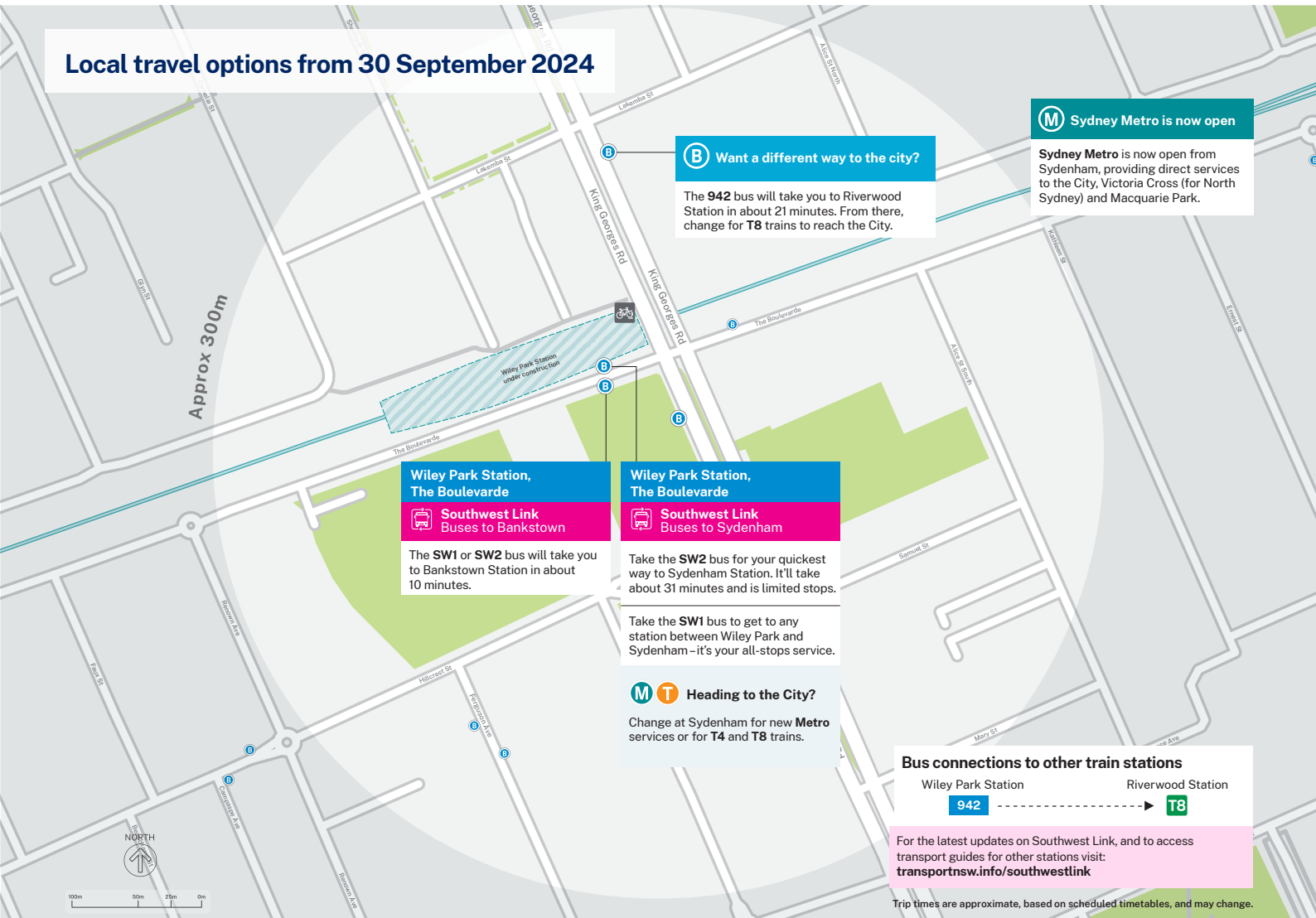
**T3 T8**

**30 September 2024**

T3 Bankstown Line closes between Sydenham and Bankstown for metro conversion work

- Southwest Link launches, providing a high frequency bus service between Sydenham and Bankstown stations for up to 12 months.
- Buses temporarily replace trains between Lidcombe and Bankstown for approximately 3 weeks.
- T3 Liverpool & Inner West Line train service introduced from Liverpool to the City via Lidcombe.
- St Peters and Erskineville stations are serviced by the T8 South Line.

### Local travel options from 30 September 2024



### Southwest Link bus services and frequencies



- Every 2 to 4 minutes during peak periods
- At least every 10 minutes across most of the day
- At least every 15 minutes late at night
- Accessible low floor buses will be used across Southwest Link bus routes.
- Travel on Southwest Link buses is fare free.

### Discover more ways to walk or ride

We're introducing lots of ways to make your walking or riding experience easier during these transport changes.



Visit [transportnsw.info/southwest-link/active-transport](https://transportnsw.info/southwest-link/active-transport) to get bike route maps, tips for your trips, and sign up for free courses and local events.

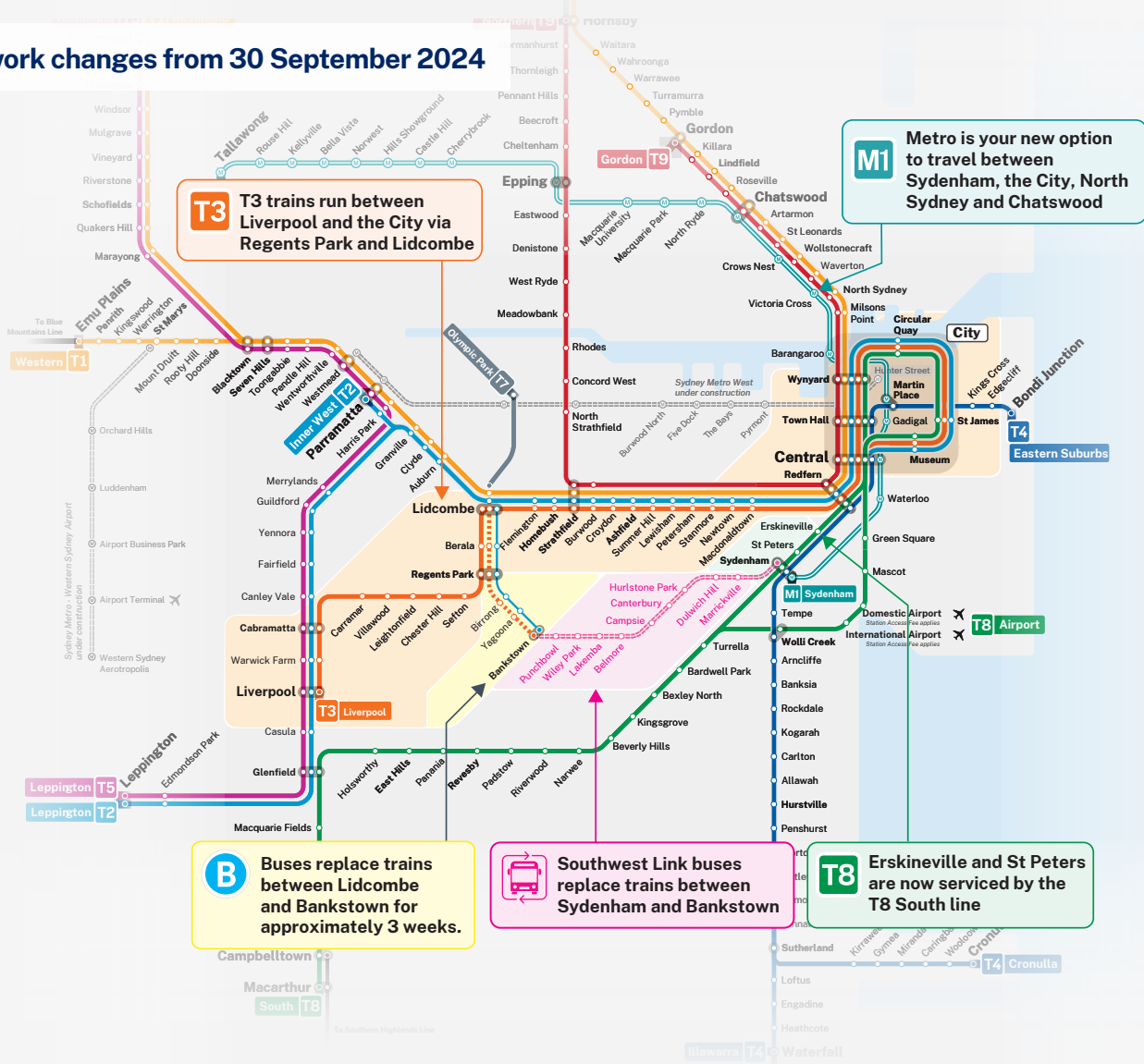


**Southwest Link**  
Making way for Sydney Metro

# Wiley Park Station

## Your transport options

### Network changes from 30 September 2024



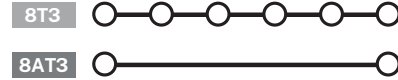
### T6 Coming soon: T6 Lidcombe & Bankstown Line

From 30 September 2024, buses temporarily replace trains between Lidcombe and Bankstown stations for approximately 3 weeks.

Yagoona and Birrong stations will be closed and serviced by train replacement buses during this time.

Transport will share further details about the T6 Lidcombe & Bankstown Line when available.

### Train replacement bus services between Lidcombe and Bankstown from 30 September 2024



**Lidcombe** – Change for trains to City, Parramatta or Redfern **T1 T2 T3**

**Regents Park** – Change for trains to Liverpool **T3**

Travel on these train replacement buses is fare free

**Translating and interpreting service**  
If you need help understanding this information, please contact the Translating and Interpreting Service (TIS) on 131 450 and ask them to call Transport for NSW on 131 500.

© Transport for NSW  
The information in this brochure is intended as a guide only and is subject to change at any time without notice.

**Plan your trip at [transportnsw.info/trip](https://transportnsw.info/trip)**  
**Allow extra travel time**  
Use Trip Planner to search trip options, check timetables and travel alerts, and see your trip mapped out.



**Southwest Link**  
Making way for Sydney Metro